

Project : Lagerventilatorer
Quotation :

Project Code : BC-10578
Date : 16 June 2023



JM Aerofoil
BC-10578-7

HT56JM/20/2/3/24

PRODUCT

Model Code HT56JM/20/2/3/24
Fan Diameter 560 mm
Fan Speed 2910 rpm [Max 3470, Min 583]
Impeller 3 Blades, 24° Angle
Installation Type D - Form B
Fan Casing Long Case - Horizontal

PERFORMANCE

Requested Duty 0.000 m³/h @ 0.000 Pa (Static)
Actual Duty 0.000 m³/h @ 0.000 Pa (Static)
Outlet Dynamic Pressure 0.000 Pa
Velocity 0.00 m/s
Peak Power 3.50 kW [Used to size motor]

MOTOR

Motor Rating 3.60 kW [100L Frame - 2 Pole]
Full Load Current 6.91 A
Starting Current 48.76 A
Electrical Supply 380 - 415 Volts 50 Hz 3 Phase
Motor Winding Standard
Motor Type TEAR - Pad - IE2 - Class H Insulation

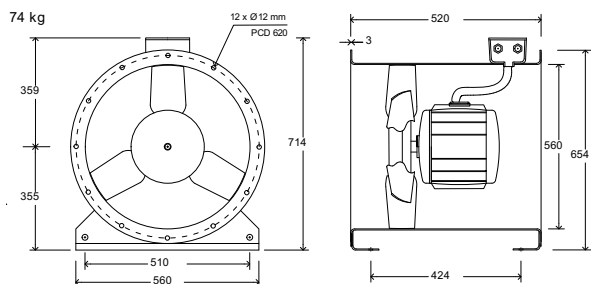
EFFICIENCY GRADES

ErP [FMEG] Rating N 68 (ErP Compliant 2015) ✓
ErP [FMEG] Target N 55.1
FMEG Blade Angle [Range] 18° [8° To 24°]
Measurement Category D
VSD No
Fan + Motor Efficiency 64.5% (3.93 m³/s @ 427 Pa)
Motor Input Power (ErP) 2.60 kW

ENVIRONMENT

Air Density 1.2 kg/m³ / 20 °C / 0 m / 40% RH
Smoke Venting 300°C for 2hrs
Operating Environment Normal

PRODUCT DIMENSIONS

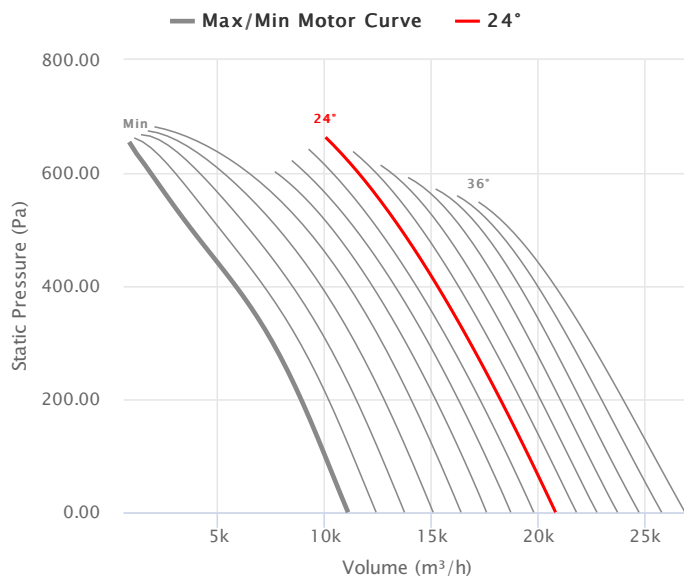


MECHANICAL

Casing 560mm Steel Casing
Impeller Aluminium LM6 Hub, Aluminium LM6 Blades
Operating Temperatures -20 °C to 50 °C [HT 300 °C]
Maximum Running Speed 3470 rpm [60 Hz]
Minimum Running Speed 583 rpm [10 Hz]
Weight 74kg

COMMENTS

FAN PERFORMANCE CURVE



ACOUSTICS

Sound Spectrum (Hz)								Overall		Distance (3 m)
125	250	500	1k	2k	4k	8k	Lw*	LWA*	LpA @ 3 m **	
Sound Data At Requested Duty.								* Lw dB re 10 ⁻¹² W		* Lw dB re 10 ⁻¹² W

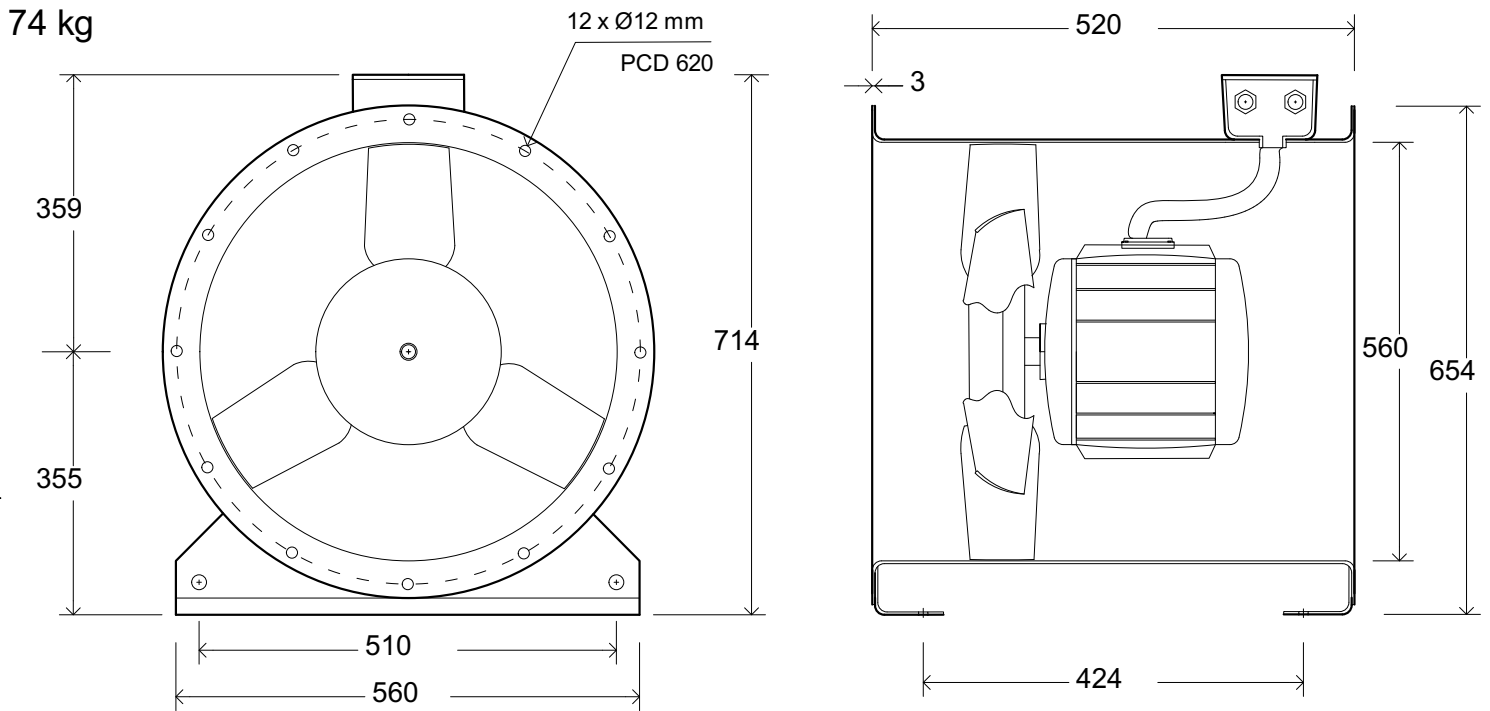
FAN & ACCESSORIES

Item Description	Part Number	Qty
HT56JM/20/2/3/24		20
Matching Flange	501355	40
Mounting Feet Set 2	AS021107	20

Project : Lagerventilatorer
 Quotation :

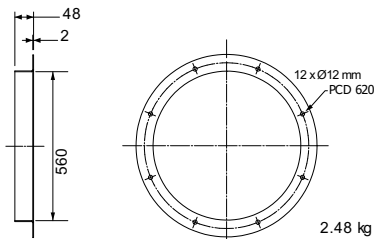
Project Code : BC-10578
 Date : 16 June 2023

PRODUCT DIMENSIONS

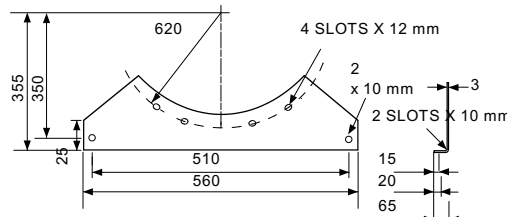


ACCESSORY DIMENSIONS

MATCHING FLANGE



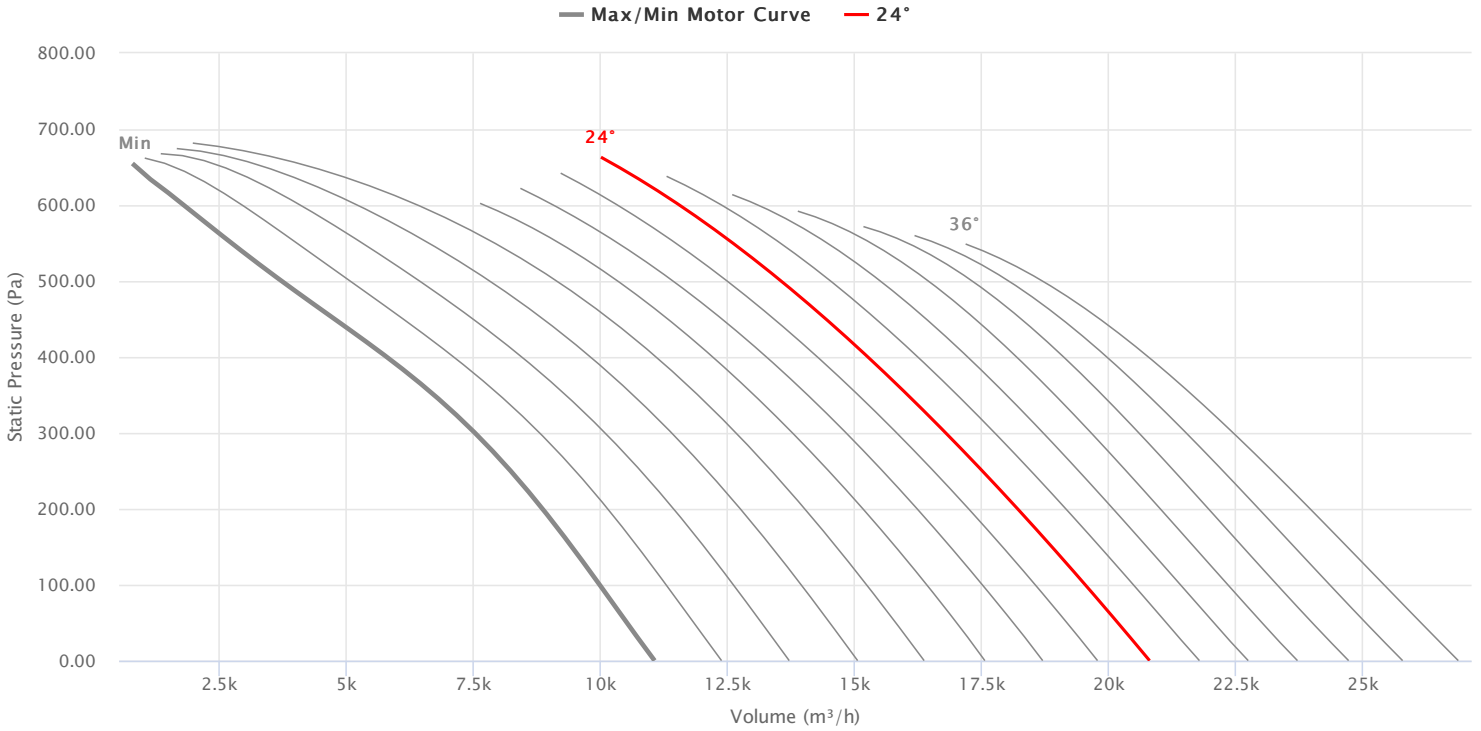
MOUNTING FEET SET 2



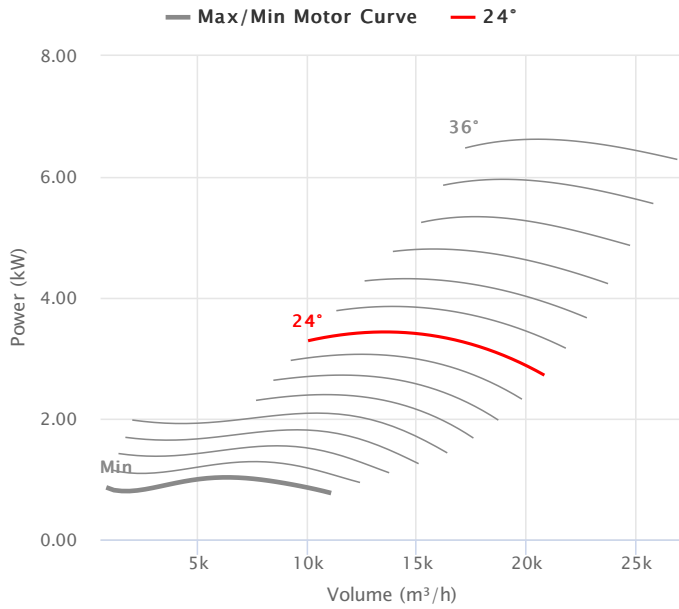
Project : Lagerventilatorer
Quotation :

Project Code : BC-10578
Date : 16 June 2023

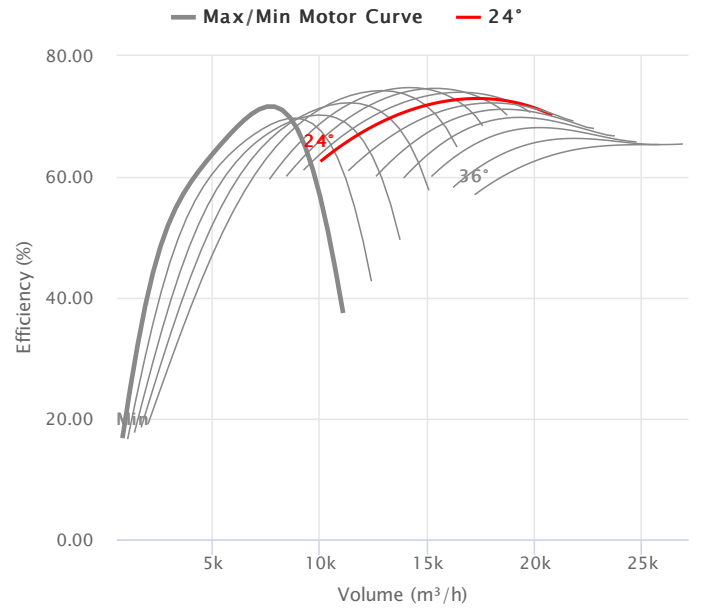
AERODYNAMIC



POWER CHART



EFFICIENCY CHART



ACOUSTICS

Sound Spectrum (Hz)								Overall	
125	250	500	1k	2k	4k	8k	Lw*	LpA @ 3 m **	
Sound Data At Requested Duty .		* Lw dB re 10 ⁻¹² W		** dBA re 2x10 ⁻⁵ Pa					