

Alterna

Alterna Image Håndvaskarmaturer

BD nr. 70 1690.104 / 70 2031.104

Uden eller med Bundventil

Forkromet



For mere information, kontakt os på Alterna@sgdd.dk eller i din nærmeste Brødrene Dahl butik

Saint-Gobain Distribution Denmark, Park Alle 370, 2605 Brøndby



Alterna Image

Beskrivelse

Alterna Image armature serien bliver produceret i Italien, og bliver brugt i flere skandinaviske lande. Serien er bestående af: to Køkken armature i L-tud og J-tud, to håndvaskarmaturer med og uden løft-op ventil, et køkkenarmatur med lavtud, et termostatbatteri og et brusesystem. Der forfindes DVGW eller VA godkendelse på produkterne.

Produktegenskaber

- Etagrebs håndtag
- Forkromet messing
- Keramisk kartouche ø35mm
- Vandspare funktion
- 3/8" flex slange tilslutning

Installationsvejledning

Se installationsvejledning medfulgt i produktet.

Drift og vedligeholdelse

- Vaskes af med en fugtig klud, opvredet i sæbevand, tørres efter med en tør klud lige umiddelbart efter
- Vi anbefaler rengøringsmidler baseret på citronsyre, der effektivt fjerner kalk uden at skade
- produkternes krom-overflade. Anvend under ingen omstændigheder : saltsyre, myresyre, eddikesyre eller fosforsyre. Brug aldrig skuremidler eller skuresvampe.
- Det anbefales ikke at bruge microfiberklude, da de kan have en slibende effekt

Mærkning/Godkendelser

DVGW - DW-6506CP0073

VA1.42/20451

Må bruges til drikkevand

Produktoversigt

BD nr. 70 1690.104

- Håndvaskarmatur uden løft-op ventil

BD nr. 70 2031.104

- Håndvaskarmatur med løft-op ventil

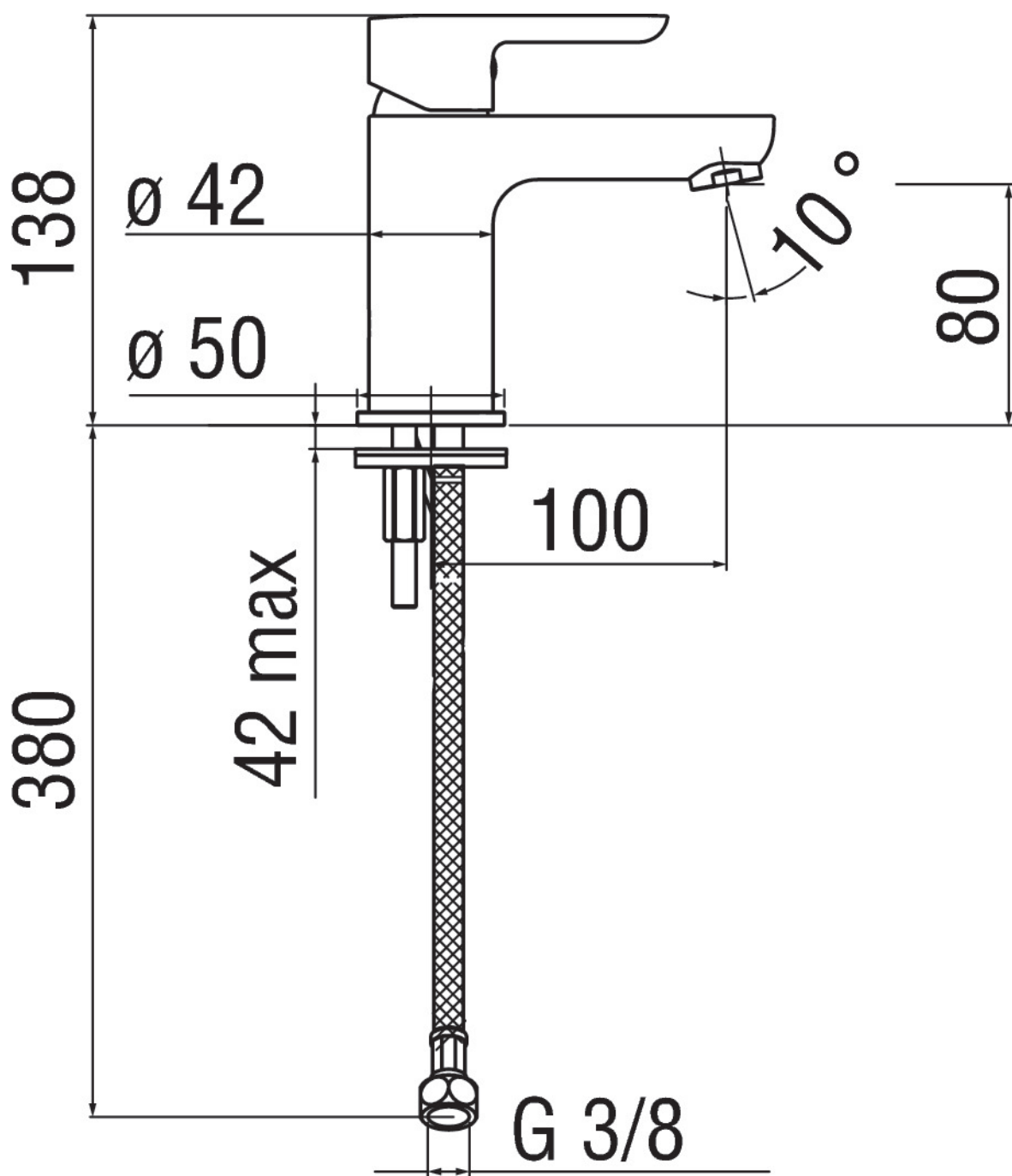
Reservedele & tilbehør

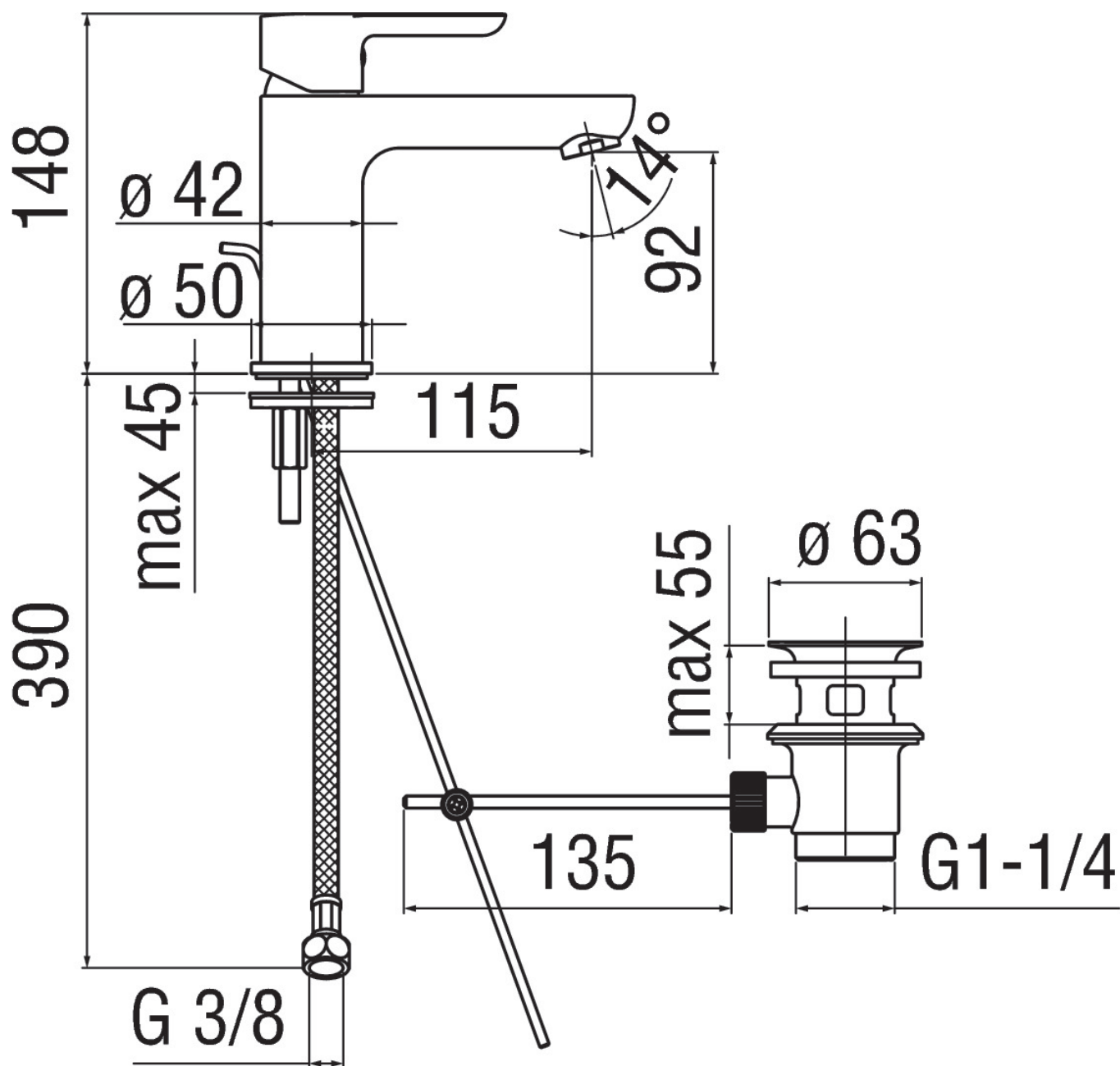
Reservedele kan fåes fra din lokale Brødrene Dahl butik.

Kontaktinformation

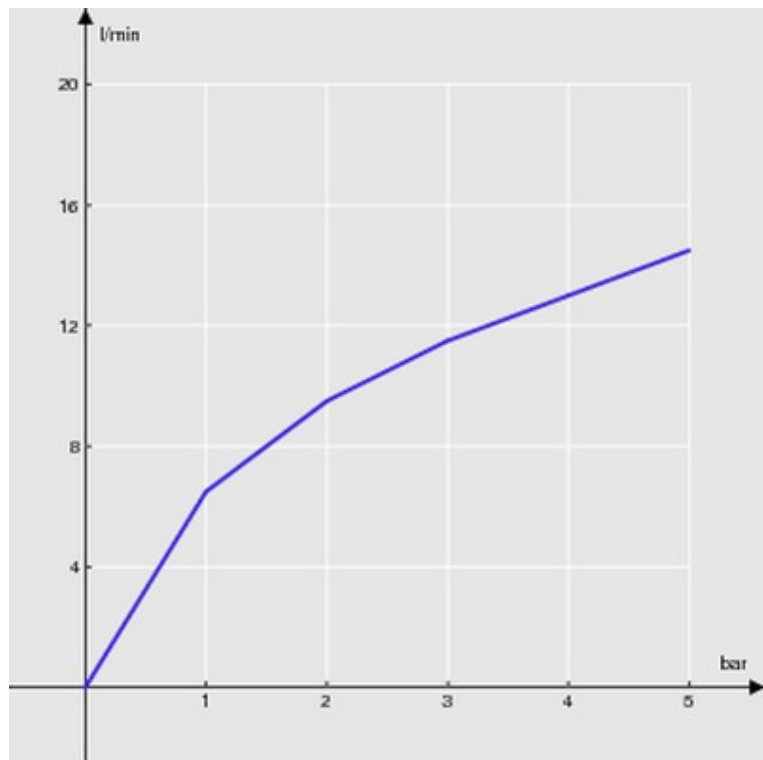
For yderligere information kontakt din lokale Brdr. Dahl butik.

Version 1



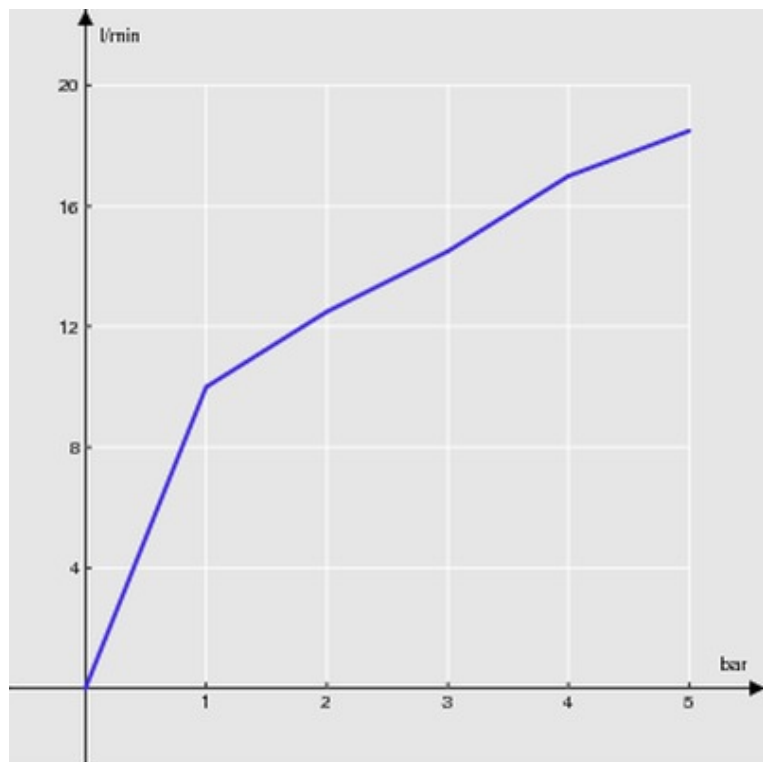


FLOW RATE DIAGRAM: HOT/COLD WATER



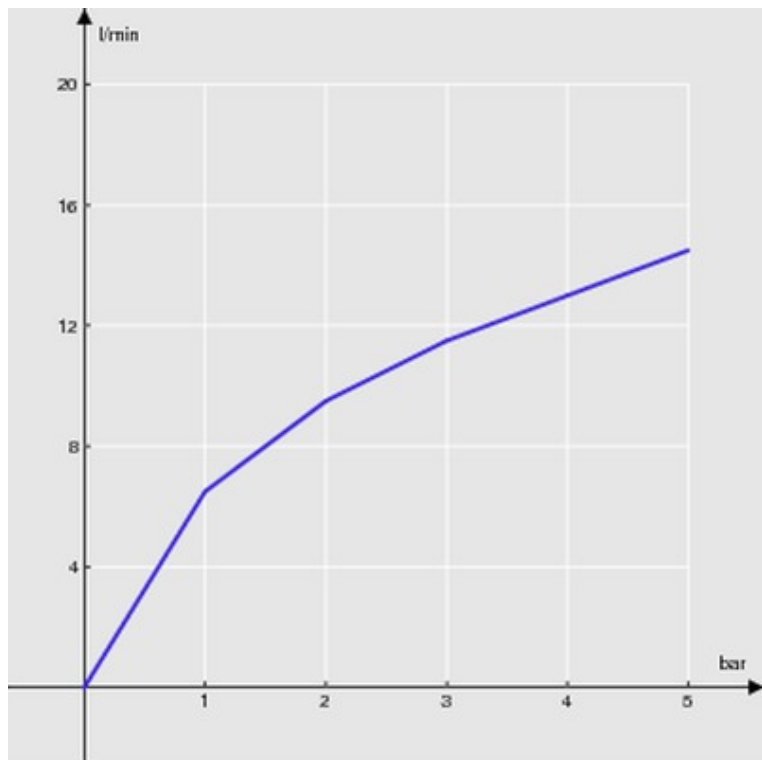
— Aerator

FLOW RATE DIAGRAM: MIXED WATER



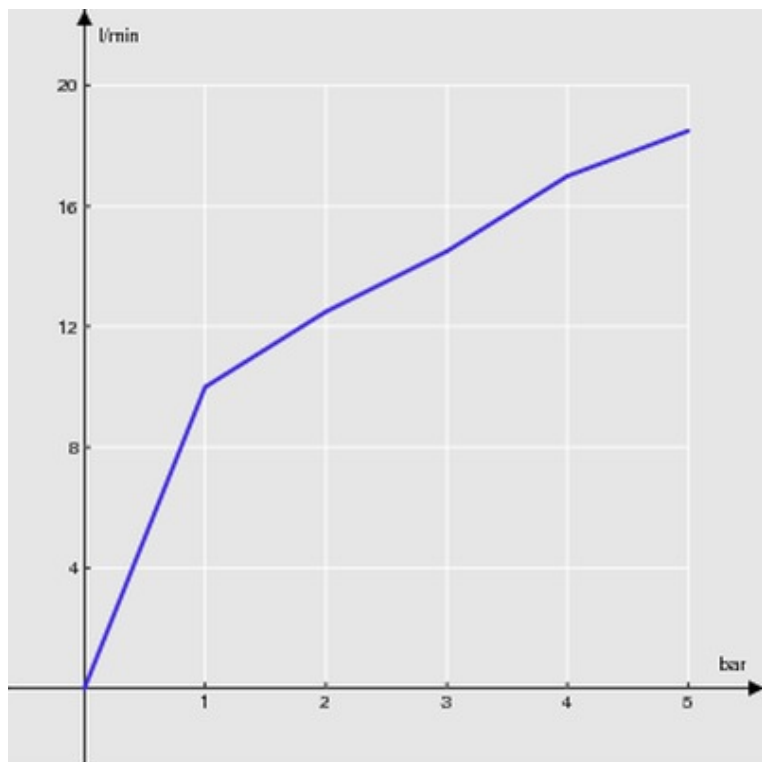
— Aerator

FLOW RATE DIAGRAM: HOT/COLD WATER



— Aerator

FLOW RATE DIAGRAM: MIXED WATER



— Aerator

DVGW-Baumusterprüfzertifikat

DVGW type examination certificate

DW-6506CS0494
Registriernummer
registration number

Anwendungsbereich <i>field of application</i>	Produkte der Wasserversorgung <i>products of water supply</i>
Zertifikatinhaber <i>owner of certificate</i>	Carlo Nobili S.p.A. Rubinetterie Via Lagone 32, I-28021 Borgomanero (NO)
Vertreiber <i>distributor</i>	Carlo Nobili S.p.A. Rubinetterie Via Lagone 32, I-28021 Borgomanero (NO)
Produktart <i>product category</i>	Sanitärarmaturen: Eingriff-Sanitärarmatur (6506)
Produktbezeichnung <i>product description</i>	Eingriff-Sanitärarmatur
Modell <i>model</i>	Serie Live
Prüfberichte <i>test reports</i>	Baumusterprüfung: RP022317 vom 31.08.2017 (TEC) KTW-Prüfung: K-260556-15-Ko/st vom 20.08.2015 (WHY) KTW-Prüfung: K-269414-16-Bs/st vom 11.04.2016 (WHY) Mikrobiologische Prüfung: W-169409e-16-SI/Ni vom 11.04.2016 (WHY) KTW-Prüfung: K-269499-16-Ko/st vom 12.04.2016 (WHY)
Prüfgrundlagen <i>test basis</i>	DIN EN 817 (01.09.2008) DVGW W 574 (01.04.2007) UBA METALLE (15.03.2017) UBA ELASTOM (16.03.2016) UBA KTW (07.03.2016) DVGW W 270 (01.11.2007)
Ablaufdatum / AZ <i>date of expiry / file no.</i>	31.08.2022 / 17-0304-WNE

70028-04-A-DE

26.02.2018 GI A-1/2

Datum, Bearbeiter, Blatt, Leiter der Zertifizierungsstelle
date, issued by, sheet, head of certification body

DVGW CERT GmbH ist von der DAkkS nach DIN EN ISO/IEC 17065:2013 akkreditierte Stelle für die Zertifizierung von Produkten der Energie- und Wasserversorgung.

DVGW CERT GmbH is an accredited body by DAkkS according to DIN EN ISO/IEC 17065:2013 for certification of products for energy and water supply industry.



Deutsche
Akkreditierungsstelle
D-ZE-16028-01-05

DVGW CERT GmbH
Zertifizierungsstelle

Josef-Wirmer-Str. 1-3
53123 Bonn

Tel. +49 228 91 88 - 888
Fax +49 228 91 88 - 993

www.dvgw-cert.com
info@dvgw-cert.com

Typ type	Technische Daten technical data	Bemerkungen remarks
LV00113	Bauform: Spültischarmatur	Auslauftiefe: 220 mm, Auslaufhöhe: 280 mm
LV00117; LV00117/1	Bauform: Spültischarmatur mit Ausziehbarem Auslauf	Auslauftiefe: 220 mm, Auslaufhöhe: 277 mm
LV00117/2	Bauform: Spültischarmatur mit Ausziehbarer Brause	Auslauftiefe: 220 mm, Auslaufhöhe: 277 mm
LV00133	Bauform: Spültischarmatur	Auslauftiefe: 185 mm, Auslaufhöhe: 245 mm
LV00134	Bauform: Spültischarmatur	Auslauftiefe: 235 mm, Auslaufhöhe: 240 mm
LV00137	Bauform: Spültischarmatur	Auslauftiefe: 227 mm, Auslaufhöhe: 187 mm
LV00300/3	Bauform: Spültischarmatur mit frei beweglicher Brause	Auslauftiefe: 220 mm, Auslaufhöhe: 160 mm

zertifizierte Bauteile / Werkstoffe
certified components

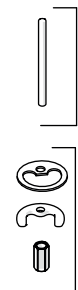
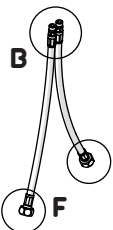
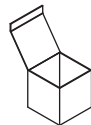
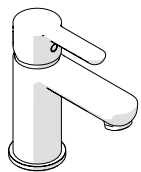
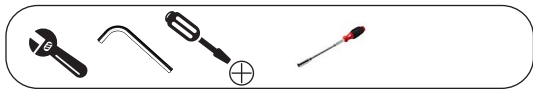
Registr.-Nr. registration no.	Bauteil (Produktart) component	Modell/Typ model/type	Hersteller manufacturer
NW-6312AS2271	Einsteckrückflussverhinderer	CV...; FR-CV.../CV 14; CV 14-AF/FR; CV 15; CV 15- FR; FRCV 15; CV 15short	NEOPERL GmbH

Verwendungshinweise / Bemerkungen
hints of utilization / remarks

Druckstufe: PN 10

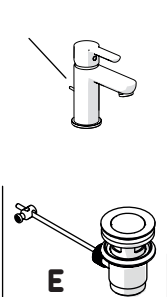
Ikke vedlagt / Nie zawarty / Not included

1

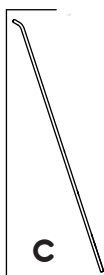


A

D



E

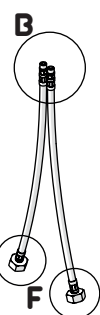
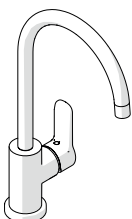


C



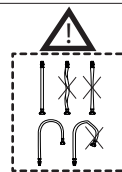
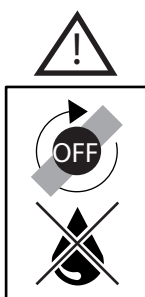
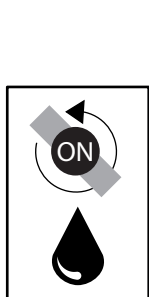
A

D



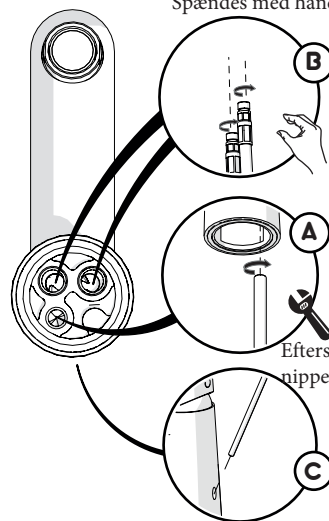
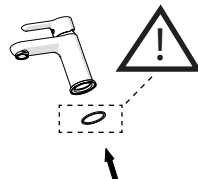
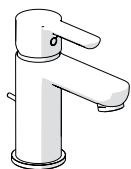
B

F



2

Spændes med håndkraft

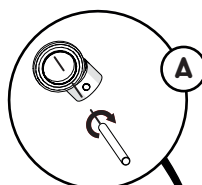
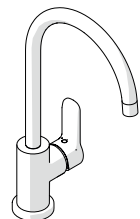


B

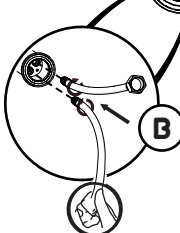
A

C

Efterspænd gevind
nippel

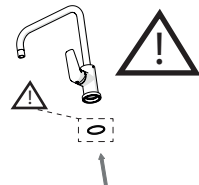


A

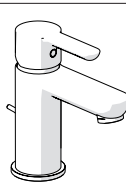


B

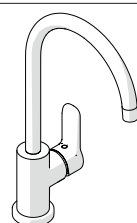
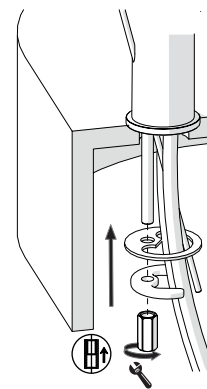
spændes med
håndkraft



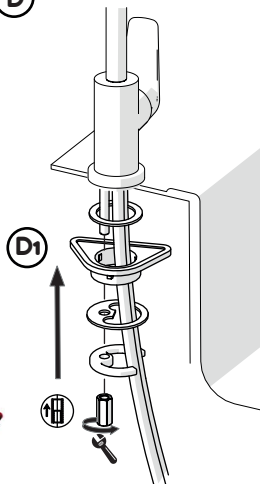
3



D

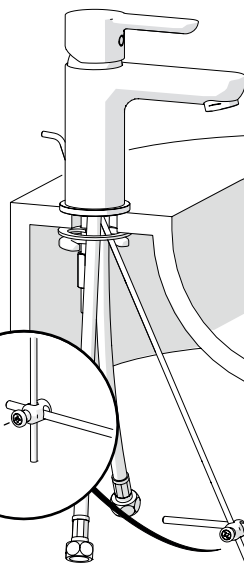
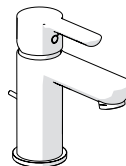


D



D1

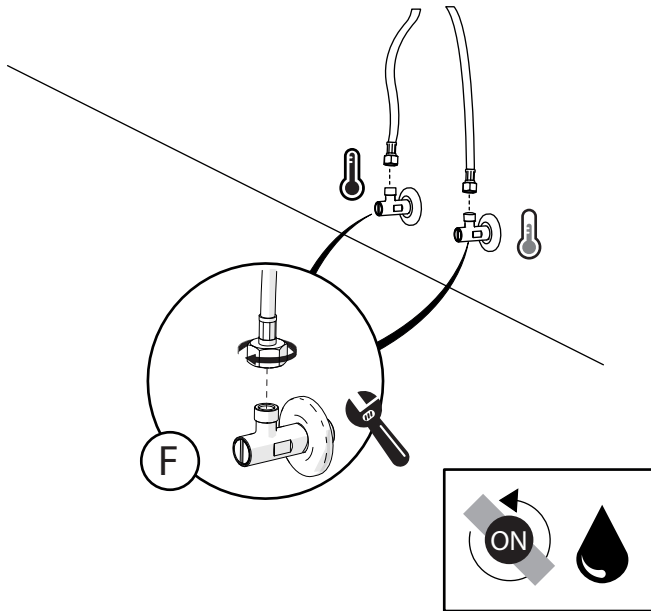
4



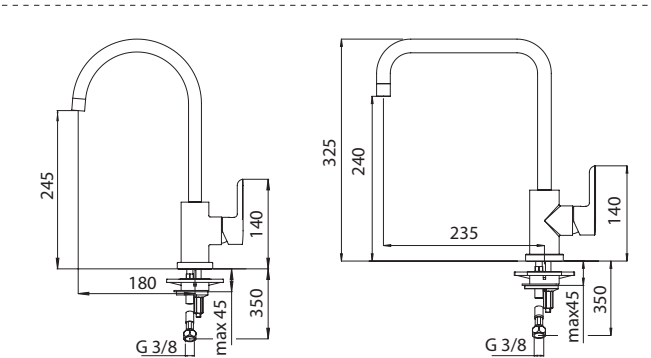
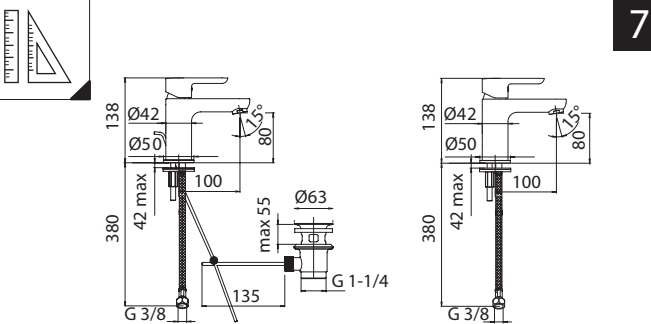
E

5

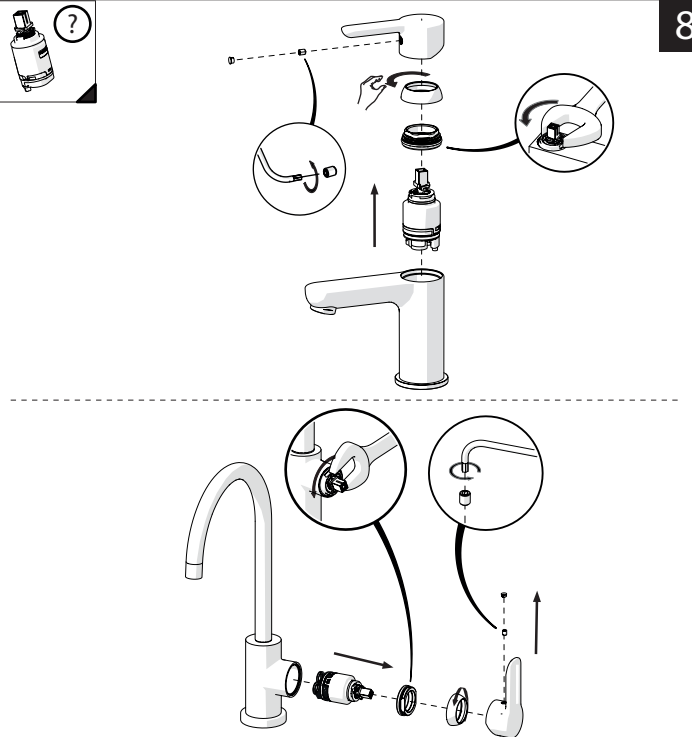
6



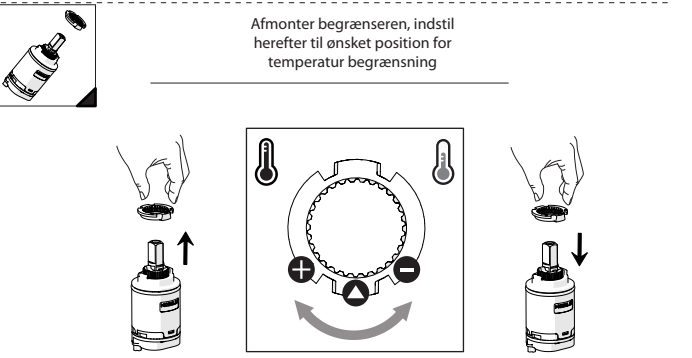
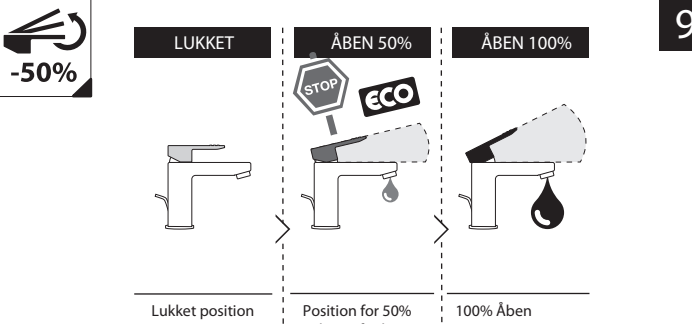
7



8



9

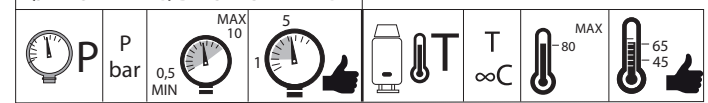


Alterna

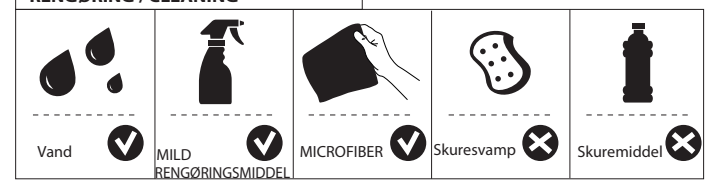
Saint-Gobain Distribution Denmark A/S
Park Allé 370 - DK 2605 BRØNDBY
ORIGIN: ITALY



FØR MONTERING / BEFORE STARTING



RENGØRING / CLEANING



Reservedele

Kartouche	BD nr. 88 4000.003
Greb	BD nr. 88 4000.012
Pakningssæt	BD nr. 88 4000.022
Dækkappe	BD nr. 88 4000.023
Spændemøtrik	BD nr 88 4000.024

